

ENG



# CALIBREATH

## User manual

### Cautions Read the following carefully before use:

- Do not disassemble or deform the device.
- Do not use the product except for the designated purpose.
- For external use only.
- Avoid skin contact. If contact occurs, rinse the area thoroughly with water. Contact a doctor if redness, swelling or irritation occurs.
- Avoid contact with eyes. If contact occurs, rinse thoroughly with water and contact a doctor.
- Keep out of children's reach.
- Store the refill pouch in a cool dry place away from direct sunlight. Empty all liquid immediately into the refill container after opening.
- Do not put excessive weight on the device.
- Do not put foreign objects in the outlet of the device.
- Keep away from open flame.
- If the product is not working or if any other issues occurs, please refer to the troubleshooting checklist.

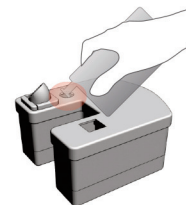
#### Data

Watt: 5  
Voltage: DC 5 V  
Ampere: 0,25  
Size: 160x160x160mm  
Weight: 950g

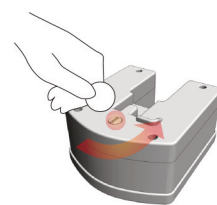
Made in  
South Korea



### How to fill the refill container with Calibreath-solution:



**1** Open the black rubber cap on the top of the container, cut the refill pouch along the dotted line and pour the liquid into the container. Close the black rubber cap and check that it is installed tightly so that the solution does not leak out.



**2** Turn the center cap on the bottom of the refill container to the direction of OPEN and install it in the main body. Turn the center cap to direction of CLOSE when not installed and keep it like that when the device is not in use for a longer period.

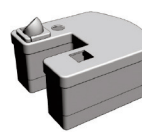
### Components of Calibreath device.



Main body



Power cord



Refill container



Refill pouch with  
Calibreath-solution



User manual

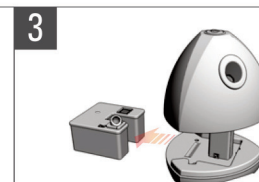
### How to replace the refill container of Calibreath.



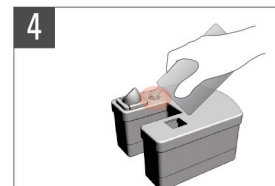
When the container is empty a red warning light will light up.



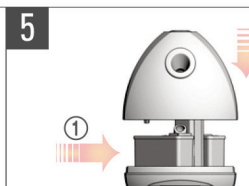
Remove the power cord from the device. Open the device by pushing the button on the bottom of the main body and lightly lift the case with your hand.



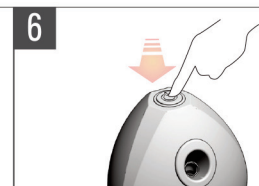
Separate the refill container from the main body and discard the used refill container (recycle as plastic).



Cut the refill pouch along the dotted line, open the black rubber cap on the new refill container and carefully pour the liquid into the container.



Close the black rubber cap tightly and reinstall the refill container in the main body. Close the case by firmly pressing the lid back into the main body until hearing a clicking sound.



Press and hold the button on the top while simultaneously reconnecting the power cord. To reset, keep pressing the button for about 7 seconds until the red light stops flashing.

### How to operate the Calibreath device.



Connect the power cord to the Calibreath device. To start the device, press the button on the top. You may select from three different modes. Press the button once to enter mode 1 (low). Press it again to enter mode 2 (medium) and press it once more for mode 3 (high). Press the button again after mode 3 to put the device into stop mode.

### Functional description of control panel.

Mode 1	Mode 2	Mode 3	Warning light for refill of solution
– green light	– orange light	– red light	– red light flashing

Operation time before refill of Calibreath solution (it may vary depending on the indoor temperature or humidity):

Mode 1 – approximately 6 months based on 8-hour operation per day.

Mode 2 – approximately 4 months based on 8-hour operation per day.

Mode 3 – approximately 2 months based on 8-hour operation per day.

### Troubleshooting.

Problem/Malfunction	Analysis	Solution
LED display: The display does not turn on.	Check power cord, connections to product and electrical outlet.	Unplug and reconnect the power cord. Make sure the cord is securely plugged in.
LED display: The display continues to flash after replacing container.	Check if refill container has been properly installed.	Check that the refill container is properly installed, see point 5 in the manual.
I cannot feel the Calibreath emitting anything, even though the screen indicates the unit is operating.	Check if the refill container is properly installed and that the bottom cap is turned to OPEN, as shown in this manual.	Check the refill container installation. Make sure it is secure and turned to OPEN on the bottom. If turned to CLOSE you may turn it to OPEN again. If necessary, reinstall and reset the device, see point 5 and 6 in the manual.



# CALIBREATH

www.calibreath.se